

CHAPTER THREE

RESULTS

3.1 Results

The highest effective concentration of *L inermis* barkchloroform extract against *T. vaginalis* was 5mg/ml with mortality of 96.2% after 240 hours

Fig (1-2) table (1-2). While 1.25µg /ml of metronidazole was gave 100% mortality at the same time. However *L inermis* leaf chloroform extract in the highest concentration 5mg/ml showed the highest activity and 94.4% after 216 hours, comparing with 100% mortality of metronidazole after 216 hours Fig (3-4) table(3-4).

The activity and mortality of *L inermis* bark methanol extract, was 2.5mg/ml after 240 hours comparing with 100% mortality of metronidazole at the same period Fig (5-6) table (5-6).

The activity of *L inermis* leaf methanol extract in low concentration was 1.25mg/ml of 100% after 240 hours, comparing with 100% mortality of metronidazole at 240 hours Fig (7-8) table (7-8)

Table (1): Indicate total No of *Trichomonas vaginalis* cells for chloroform extract of *L inermis* bark in different concentrations in RPMI 1640 medium and incubated at 37 °C for 10 days and the reading was take in triplicate.

dose	0hr	24hr	48hr	72hr	96hr	120hr	144hr	168hr	192hr	216hr	240hr
ctrl +ve	30107.7	30306	25619	27548	28546	28996	29658	24215	22876	21547	3408
5000 ppm	20689.4	22866.7	23933.3	24586	42586	55326	20700	15233.3	9500	5266.67	16508
2500 ppm	20568.6	22633.3	25478.3	28654.9	58365.6	67258.4	49653.3	22500	12733.3	7533.33	20507.7
1225 ppm	39100	39854	42789	45872	75846	68954	11033.3	11833.3	7333.33	7100	0
ctrl -ve	49404.3	52786	54612	66957	82548	90369	82765	17066.7	8266.67	17966.7	17300

Figure (1) the activity of chloroform extract of *L. inermis* bark against *Trichomonas vaginalis*:

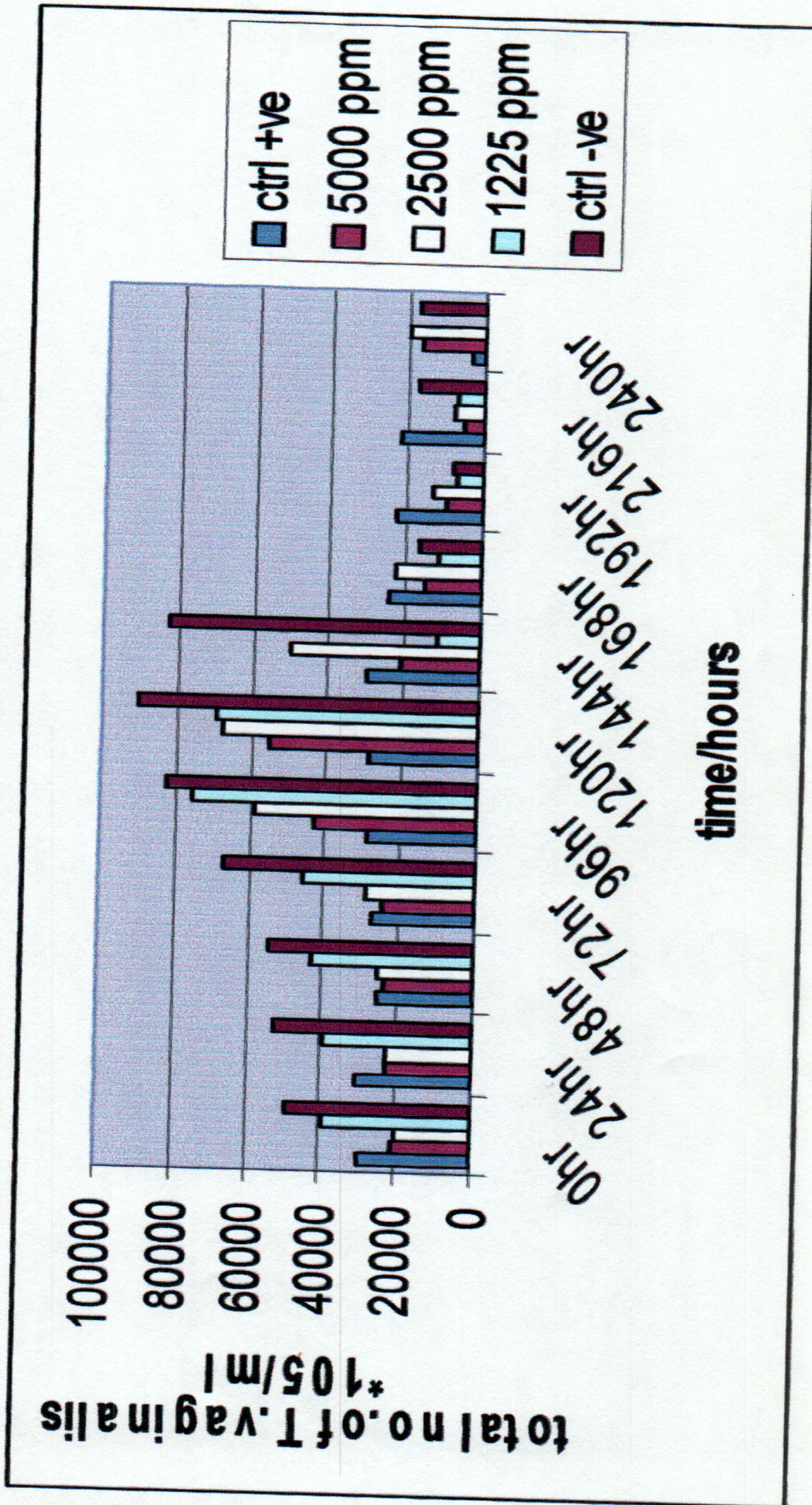


Table (2): Indicate mortality (%) of *Trichomonas vaginalis* cells for chloroform extract of *L inermis* bark in different concentrations in RPMI 1640 medium and incubated at 37 °C for 10 days and the reading was take in triplicate:

dose	120hr	144hr	168hr	192hr	216hr	240hr
ctrl +ve	67.9138	67.1812	73.2043	74.686	76.1566	100
5000 ppm	38.7777	77.0939	83.1432	89.4875	94.172	96.2288
2500 ppm	25.5736	45.0549	75.1021	85.9096	91.6638	81.7327
1225 ppm	23.6973	87.7908	86.9055	91.8851	92.1433	95.3067
ctrl -ve	0	8.41439	81.1145	90.8523	80.1186	80.8563

Figure (2) the activity of chloroform extract of *L. inermis* bark against *Trichomonas vaginalis*:

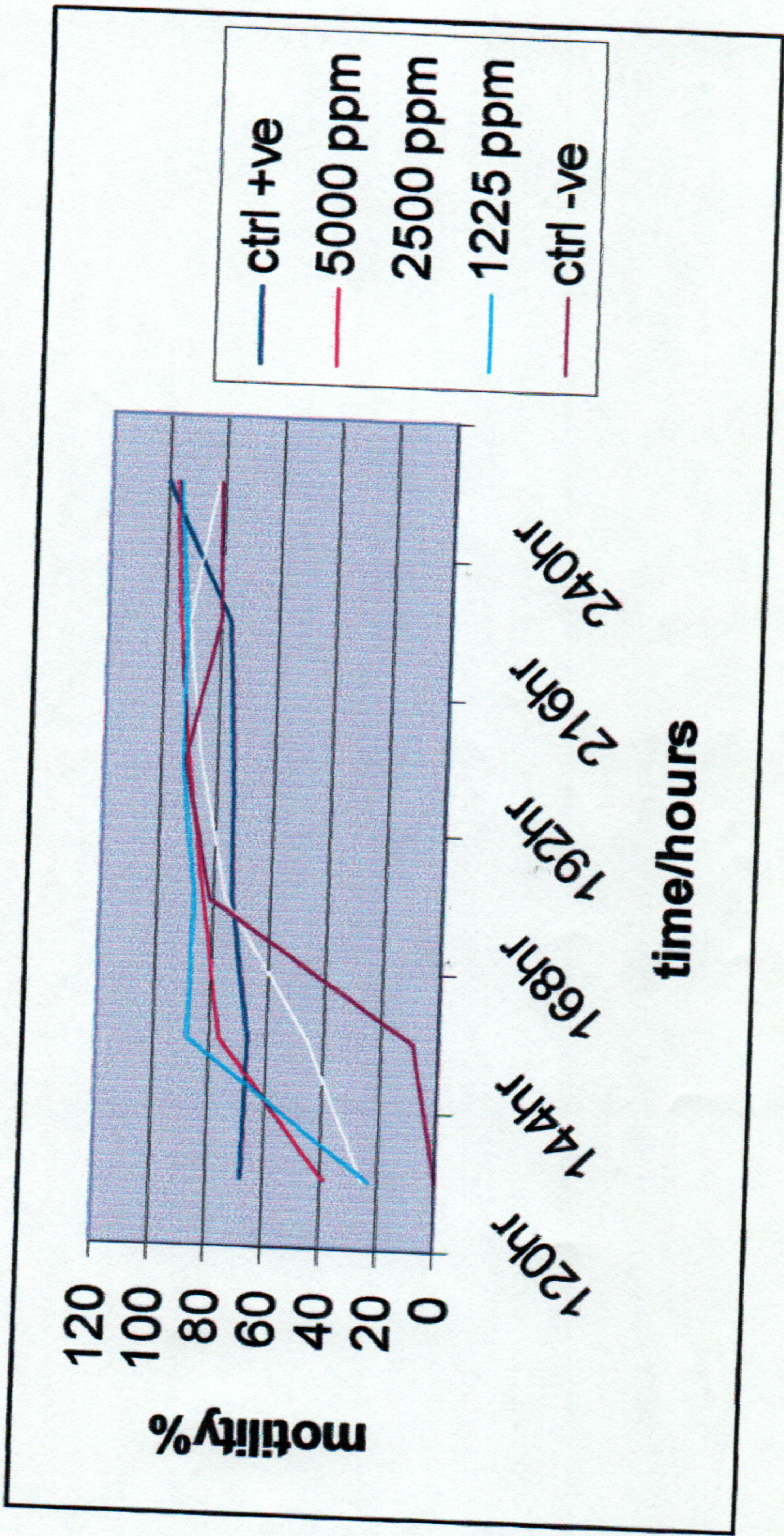


Figure (3) the activity of chloroform extract of *L. inermis* leaf against *Trichomonas vaginalis*

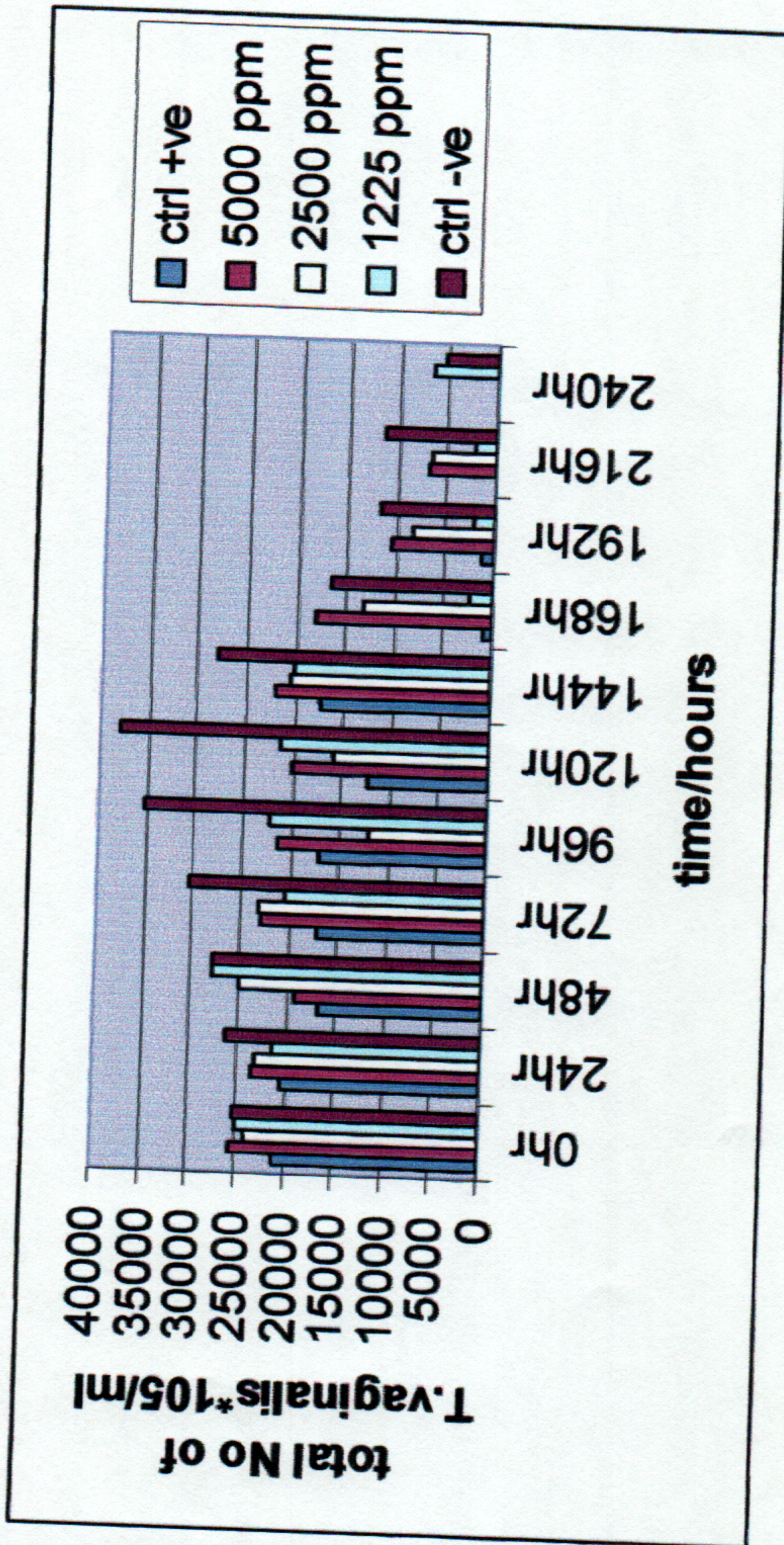


Table (4): Indicate mortality (%) of *Trichomonas vaginalis* cells for chloroform extract of *L. inermis* leaf in different concentrations in RPMI 1640 medium and incubated at 37 °C for 10 days and the reading was take in triplicate

dose	120	144hr	168hr	192hr	216hr	240hr
ctrl +ve	67.249	54.491	97.282	96.756	100	100
5000 ppm	46.845	42.566	52.825	72.554	81.761	100
2500 ppm	58.425	46.249	65.014	77.553	82.551	100
1225 ppm	44.206	46.775	93.511	94.3	94.388	82.638
ctrl -ve	0	26.344	56.859	69.485	69.573	85.742

Figure (4) the activity of chloroform extract of *L. inermis* leaf against *Trichomonas vaginalis*:

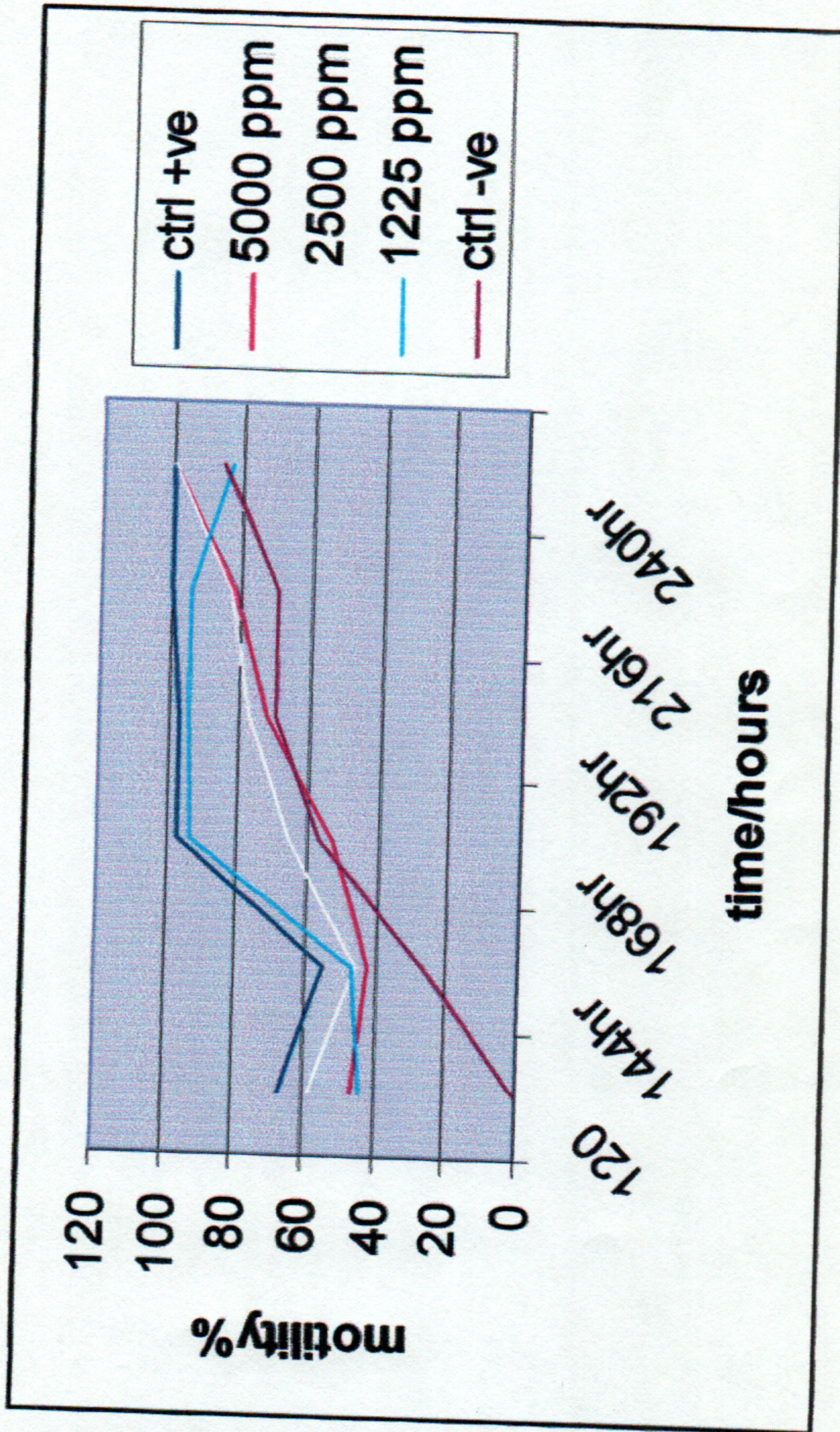


Table (5): Indicate total No of *Trichomonas vaginalis* cells for for methanol extract of *L inermis* bark in different concentrations in RPMI 1640 medium and incubated at 37 °C for 10 days and the reading was take in triplicate.

se l e 00 m 00 m 25 m l-	0hr	24hr	48hr	72hr	96hr	120hr	144hr	168hr	192hr	216hr	240hr
	25966.67	30254.25	33548.25	21457.66	19568.45	17258.65	16985	11548	6633.333	3214	0
	30700	32066.67	33200	35566.7	40607.67	50016.33	16833.33	12566.67	11766.67	6300	0
	30333.33	30266.67	33733.33	40133.3	50407	40008	11366.67	9100	7966.667	9100	0
	31333.33	20133.33	25100	23166.7	32504	21304	7933.333	7733.333	10100	14500	1805.667
	30266.67	30066.67	20700	27466.67	61325	58258	38000	16400	8266.667	7966.667	3331

Figure (5) the activity of chloroform extract of *L. inermis* bark against *Trichomonas vaginalis*:

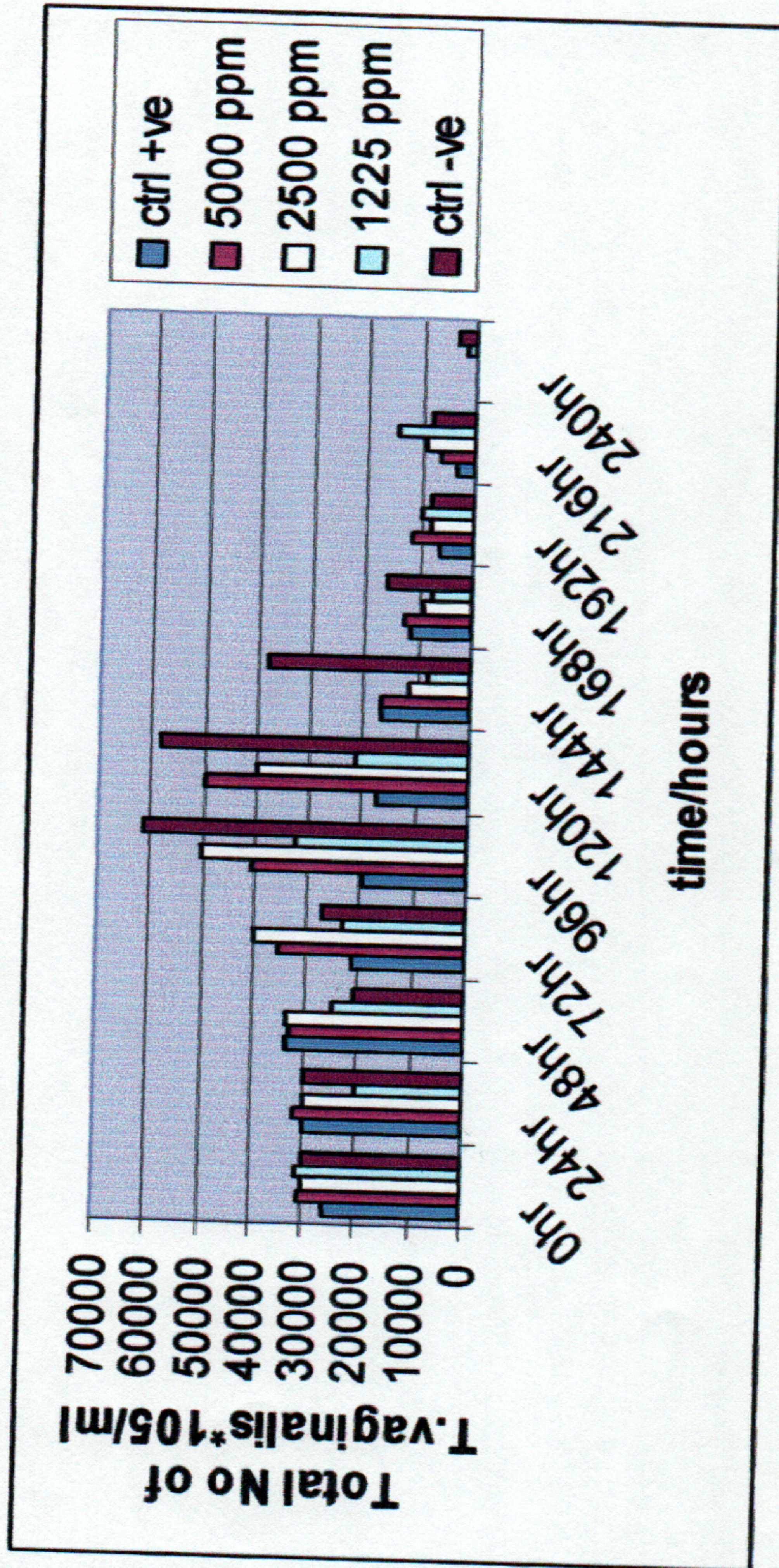


Table (6): Indicate mortality (%) of *Trichomonas vaginalis* cells for for methanol extract of *L. inermis* bark in different concentrations in RPMI 1640 medium and incubated at 37 °C for 10 days and the reading was take in triplicate:

dose	96	120	144hr	168hr	192hr	216hr	240hr
ctrl +ve	68.091	71.857	72.303	81.169	89.183	94.759	100
5000 ppm	33.783	18.441	72.551	79.508	80.813	89.727	100
2500 ppm	17.804	34.761	81.465	85.161	87.009	85.161	100
1225 ppm	46.997	65.26	87.063	87.39	83.53	76.355	97.056
ctrl -ve	0	5.0012	38.035	73.257	86.52	87.009	94.568

Figure (6) the activity of chloroform extract of *L. inermis* bark against *Trichomonas vaginalis*:

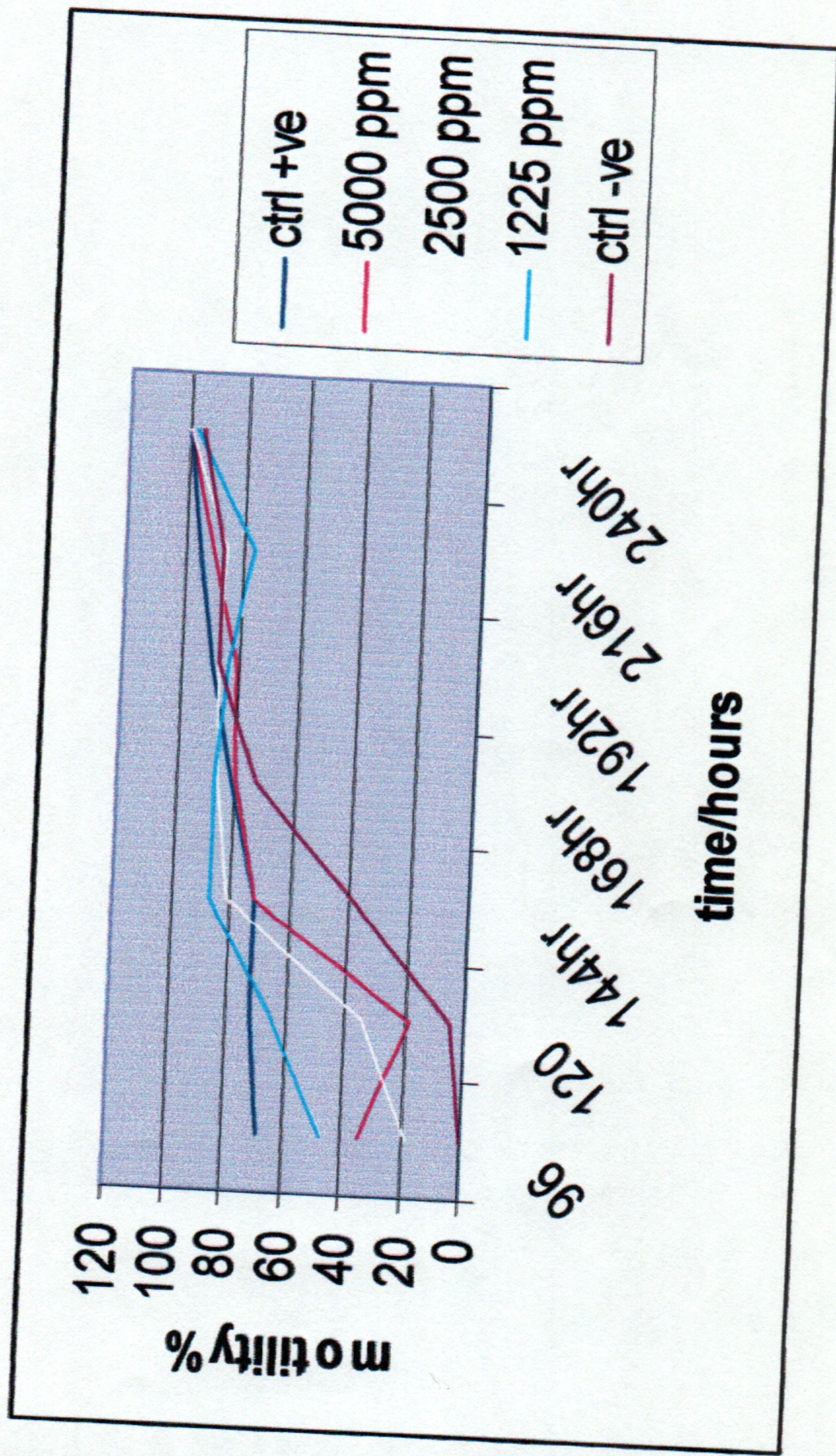


Table (7: Indicate total No of *Trichomonas vaginalis* cells for methanol extract of *L inermis* leaf in different concentrations in RPMI 1640 medium and incubated at 37 °C for 10 days and the reading was take in triplicate

se l e 00 m 00 m 25 m l-	0hr	24hr	48hr	72hr	96hr	120hr	144hr	168hr	192hr	216hr	240hr
	25966.67	30254.25	33548.25	21457.66	19568.45	17258.65	16985	11548	6633.333	3214	0
	29366.67	31548	33568	36598	39658	32009	12666.67	10633.33	8666.667	6533.333	0
	25400	26766.67	33547	38657	32547	28547	23658	18659	14658	10258	0
	29100	32100	38452	39658	55896	48006.33	40258	10666.67	8966.667	4433.333	0
	30266.67	30066.67	42587.36	54789.65	65325	60258	38000	20458	8266.667	7966.667	25

Figure (7) the activity of chloroform extract of *L. inermis* leaf against *Trichomonas vaginalis*:

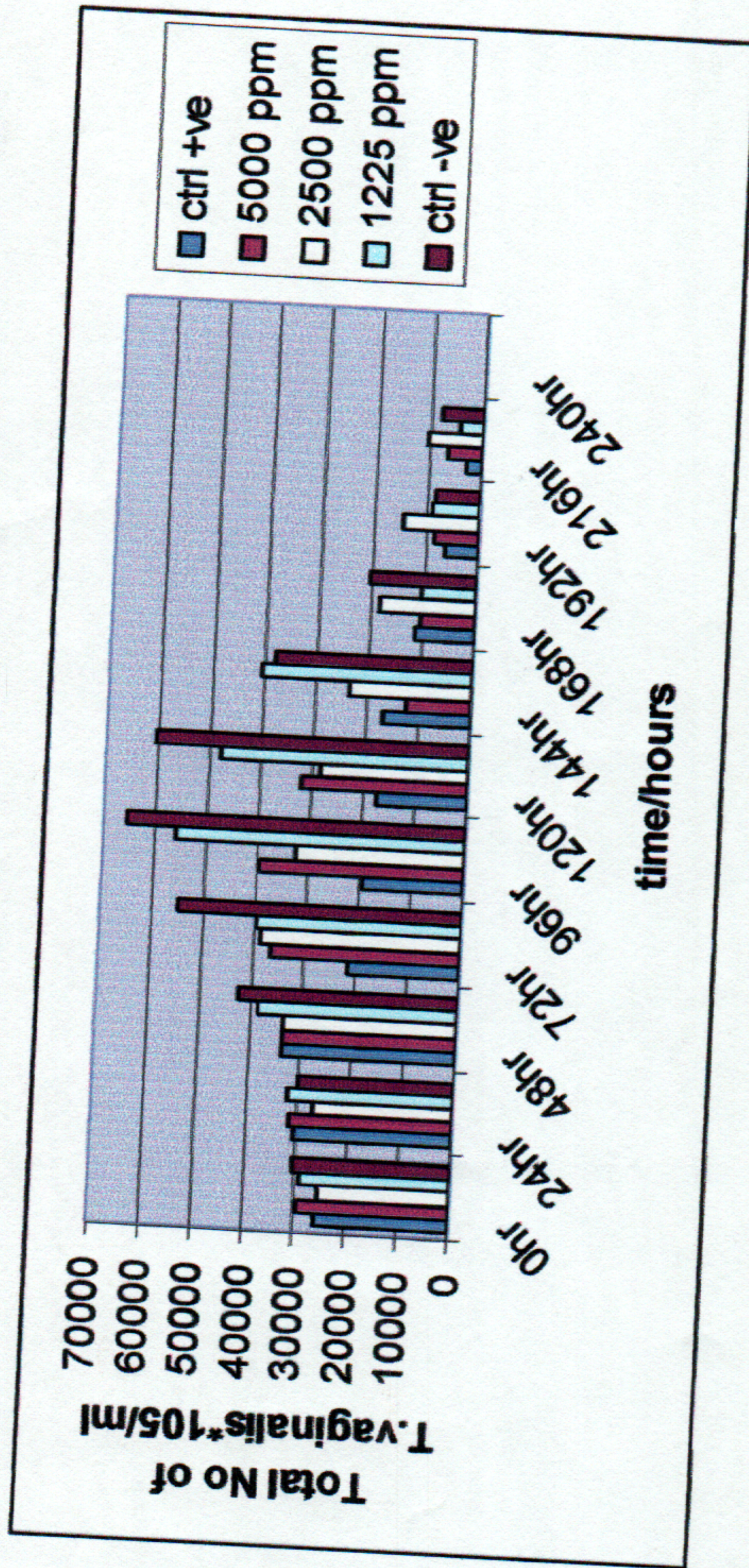


Table (8): Indicate mortality (%) of *Trichomonas vaginalis* cells for for methanol extract of *L inermis* leaf in different concentrations in RPMI 1640 medium and incubated at 37 °C for 10 days and the reading was take in triplicate:

dose	96	120	144hr	168hr	192hr	216hr	240hr
ctrl +ve	70.044	73.58	73.999	82.322	89.846	95.08	100
5000 ppm	39.291	51	80.61	83.722	86.733	89.999	100
2500 ppm	50.177	56.3	63.784	71.437	77.561	84.297	100
1225 ppm	14.434	26.512	38.373	83.671	86.274	93.213	100
ctrl -ve	0	7.7566	41.829	68.683	87.345	87.805	99.962